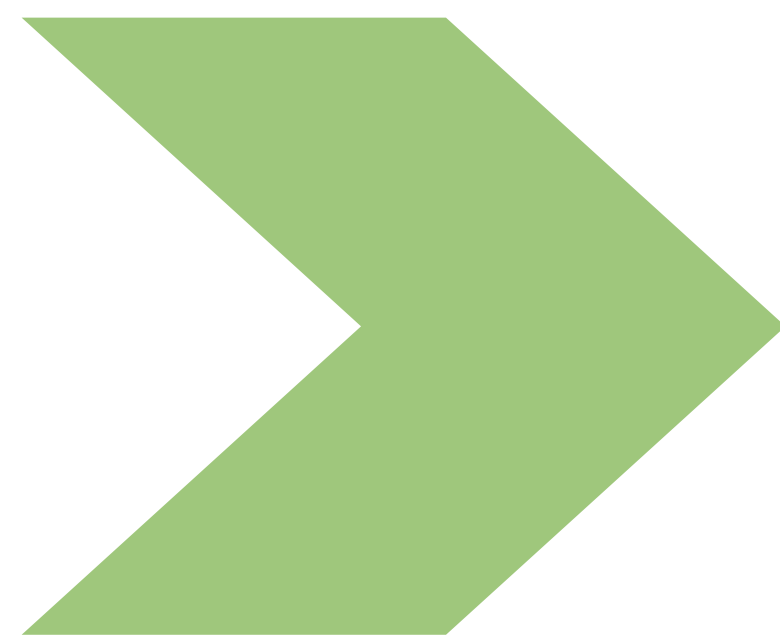




Enfield County
School for Girls

POST-16 CURRICULUM GUIDE



2023/24

ENTRY INFORMATION

ONWARD EVER

WELCOME

TO ENFIELD COUNTY POST-16



Ms Foster
Deputy Headteacher
and Curriculum Leader



Mr Matthai
Progress and Achievement
Leader (Year 12)



Ms Gumbrell
Headteacher



Mr Lloyd
Assistant Headteacher
(Post 16)



Ms Cowell
Progress and Achievement
Leader (Year 13)

'I am pleased to present our Post 16 Prospectus and look forward to meeting students and parents/carers over the application and induction process.'

Post 16 at Enfield County School

Our students feel very positive about staying on into the Sixth Form at Enfield County. The Ofsted judgment on our Sixth Form is 'Outstanding' (October 2012). The school offers the benefits of highly qualified teachers and excellent pastoral support as well as specialist accommodation for this most important phase of a young person's education.

A Level Studies

The school has a long experience of successful A level teaching and it is in the light of this experience that we have set the following entry requirements for starting A level courses:

At least 3 GCSE passes at grade 6 or above

At least a further 2 GCSE passes at grade 5 or above

These 5 or more GCSEs must include English Language and Mathematics

*Please note that many A Level subjects set further entry requirements specific to the subject, these are included in the detailed subject entries.

Vocational Qualifications

The school offers Level 3 Vocational qualifications in Health and Social Care and Applied Science. The entry requirements for the courses are at least 5 GCSE passes at grade 4/5 or above including grade 5 passes in English Language and Mathematics. A BTEC First Award at merit grade or above will be accepted instead of one GCSE grade. Further details are included in this guide.

Studying at Enfield County

Post 16 courses are full-time. This represents 15 hours of lesson time with students completing 15 hours of homework in addition. This makes up 30 hours in total. Students also are supported with an hour a week Extension Time. In this pupils will do supported silent study, study skills and enrichment activities. All students are expected to meet entry criteria for their courses for Year 12 and for Year 13. There is also a Level 2 programme available to enable students to access our level 3 provision in year 2 of a 3 year programme of study. There are Level 2 courses in Health and Social Care and Applied Science.

A new feature of their education for all the students will be having the independence to organise their own study time as well as having supervised study sessions and Extension Hours. The school has specialist study facilities in the Sixth Form area and the Study and Research Centre (SRC) as well as further support for any students who need help to organise their time effectively.

After the Sixth Form

Post 16 courses are an excellent preparation for university and work. Most of our students go on to university and the school has a specialist UCAS support to facilitate the application process. Please refer to the Enrichment Booklet to see the extensive and growing provision made to support students in securing the very best Progression offers that they can achieve.

Ms J Foster, Deputy Headteacher



CONTENTS

4	Applied Science: BTEC Level 3	20	Geography
5	Health and Social Care: BTEC Level 3	21	History
7	Art & Design: Fine Art Endorsed A Level	23	Mathematics
8	Art & Design: Photography Endorsed A Level	24	Music
9	Art & Design: Textiles Endorsed A Level	26	Philosophy
10	Biology	27	Physics
11	Business: BTEC Level 2	28	Politics
12	Business: BTEC Level 3	30	Psychology
13	Chemistry	31	Sociology
14	Classic Civilisation	32	Spanish
15	Economics	33	Requirements Overview
16	English Language	35	Student Responsibilities
17	English Literature	36	Sixth Form Learner Agreement
18	Film Studies	37	Rooms for Open Evening
19	French	38	Map

Applied Science

BTEC LEVEL 3 National Extended Certificate



Contact:

Ms Y Hadjidaniel

Entry Requirements:

5-5 Combined Science or 5 in two separate sciences
plus 5-5 English and Mathematics

Student Course Criteria

This is a 2 year course equivalent to 1 A level award and is for those students who are interested in Science and committed to applying themselves fully to all the demands of this course. This is an applied general qualification for post-16 learners who want to continue their education through applied learning and who aim to progress to higher education, and ultimately to employment, possibly in the applied science sector.

Course Overview

Principles and Applications of Science

This unit is assessed through a written exam of 2h and is marked externally whose content includes: animal and plant cells; tissues; atomic structure and bonding; chemical and physical properties of substances related to their uses; waves and their applications in communications.

Practical Scientific Procedures and Techniques

This unit introduces the learner to standard laboratory equipment and techniques such as titration, colorimetry, calorimetry and chromatography and is assessed internally. This is a coursework unit and students must meet deadlines.

Science Investigation Skills

Students will develop the essential skills underpinning practical science investigations. As well as drawing on unit 1 and unit 2, these skills will be delivered through subject themes ranging from enzymes and diffusion to electrical circuits. This unit will be assessed by an externally set assessment task which will assess the students' ability to plan, process, analyse and evaluate scientific findings using primary/secondary information/data. The assessment will be based upon a 1.5h supervised practical investigation sat prior to the assessment task.

Physiology of Human Body Systems

This unit will focus on 3 body systems: musculoskeletal, lymphatic and digestive. Assignments will be set and students will be expected to use a range of research, practical and evaluative skills to produce work independently. This will be assessed internally.

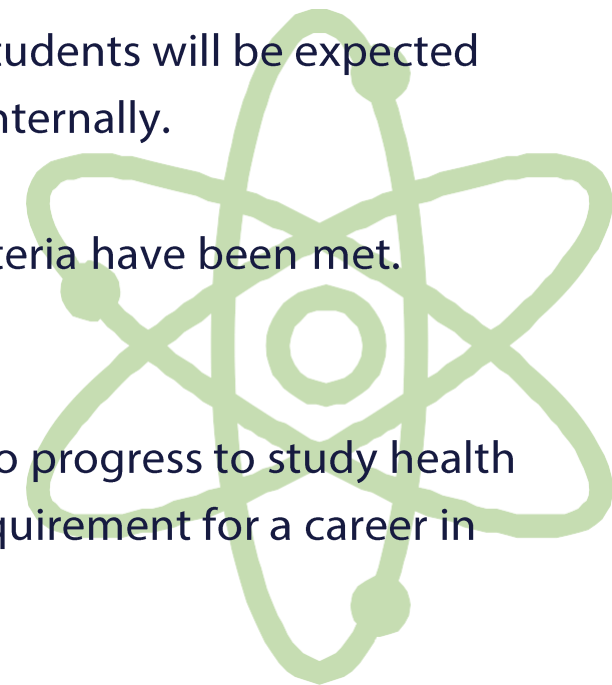
Assessment of this course will be awarded at either Pass, Merit or Distinction level providing all assessment criteria have been met.

Further opportunities following this course

An understanding of the fundamental systems that makeup the human body is a key requirement if you wish to progress to study health and care-related programmes or biomedical sciences in further education and at university. It is an essential requirement for a career in sport- and health-related disciplines, for example physiotherapist, sports trainer and exercise physiologist.

Securing a place at post-16

Students must attain at least grades 5,5 in Combined Science (Double Award) or grades 5 and above in 2 separate Science GCSEs. In addition, students must attain at least a grade 5 in both English and Mathematics.



Health and Social Care

BTEC Level 3



Syllabus Code:

Extended Certificate: 360GLH

Diploma: 720GLH

Extended Diploma: 1080GLH

Contact:

Ms S Fedarb

Entry Requirements:

5 GCSEs at Level 4 or above inc English and Maths or Science

Student Course Criteria

This course is suitable for students who have a serious interest in working in health and social care. The course provides students with a thorough foundation in the knowledge skills and understanding required for working in the health and social care sector. There are many different units which cover human lifespan development and anatomy and physiology, as well as exploring and supporting individuals with additional needs and working in a health and social care environment.

Course Overview

These are vocational level 3 qualifications available in Health and Social Care:

- Extended Certificate: Equivalent to 1 A Level (Units 1, 2, 5, 12) This can be taken alongside 2 other A levels
- Diploma: Equivalent to 2 A Levels (Units 1, 2, 4, 5, 7, 8, 12, 14) This can be taken along with one other A Level
- Extended Diploma: Equivalent to 3 A Levels (Units 1, 2, 3, 4, 5, 6, 7, 8, 9, 10, 12, 14, 20)

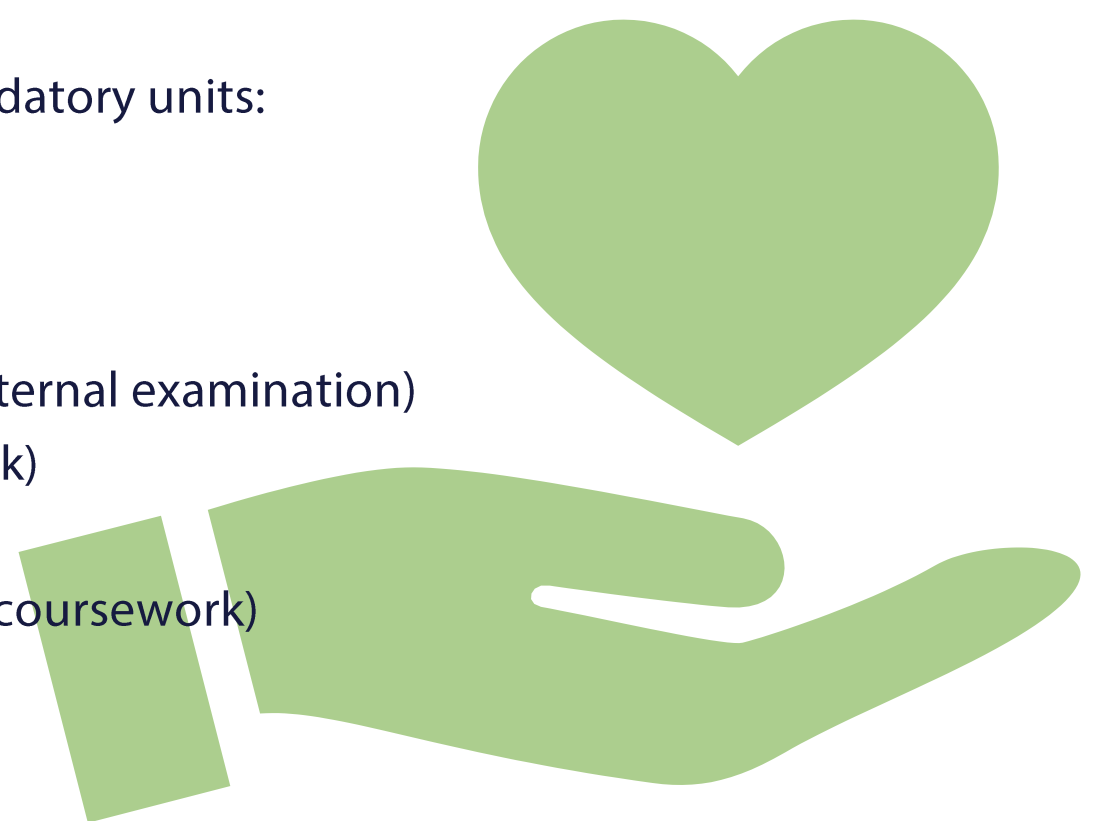
Course content

Students will study a range of units over two years. This includes mandatory units:

- Unit 1: Human Lifespan Development (external examination)
- Unit 2: Working in Health & Social Care (external examination)
- Unit 3: Anatomy and Physiology (external examination)
- Unit 4: Enquiries into Current Research in Health & Social Care (external examination)
- Unit 5: Meeting Individual and Support Needs (internal coursework)
- Unit 6: Work experience (internal coursework)
- Unit 7: Principles of Safe Practice in Health & Social Care (internal coursework)
- Unit 8: Promoting Public Health (internal coursework)

And optional units:

- Unit 12: Supporting Individuals with Additional Needs (internal coursework)
- Unit 14: Physiological disorders and their Care (internal coursework)
- Unit 10: Sociological Perspectives (internal coursework)
- Unit 9: Infection, Prevention and Control (internal coursework)
- Unit 20: Understanding Mental Well-being (internal coursework)



CONT. HEALTH AND SOCIAL CARE NEXT PAGE

Work Experience

Work Experience (100 hours) in a range of care settings is an essential and compulsory part of the course and will be provided throughout the 2 years.

Course Assessment

Students will be assessed through course work assignments, and external examinations. Course work will be internally marked and moderated and externally verified.

Further Opportunities Following this Course

Progression to Higher Education for Professional or Academic Degree. e.g. Degree in Nursing; Midwifery, Radiography; Social or Youth work; Probation; Teaching; Early years Education, Sociology; Psychology; Social Policy, Politics, Religious Studies. Students can go directly into employment or apprenticeships as administrators, health care assistants or care assistants. This course gives the underpinning knowledge for NVQ Level 3.

Securing a Place at Post-16

You will need to have gained at least 5 GCSEs at grade 4 or above including English Language and Mathematics and a Grade 4 in Science if opting to study the Extended Diploma in Health and Social Care. (BTEC Tech Award at Merit grade or above will be accepted instead of one GCSE at grade 4 or above).



Art & Design

Fine Art Endorsed A Level

edexcel 



Syllabus Code:

9FA0

Contact:

Ms M Williams

Entry Requirements:

6 in Art

Student Course Criteria

Students who have a proven interest and aptitude in art and design and wish to further develop their ideas, skills and knowledge. Also, for those students who are thinking about careers for which an art background would be relevant.

Course Overview

You will develop your ability to appreciate the visual world and to respond in a personal and creative way using a variety of materials and techniques. You will develop your experimental, analytical and documenting skills together with your knowledge and understanding of art and design in historical and contemporary contexts.

Course Assessment

2 units over the two years for A Level

Component 1 – Coursework 60%

Component 2 – Externally Set Assignment 40%

Further Opportunities Following this Course

Students often go on to further studies in Art and Design, usually at Art College or further education. These studies lead to many related careers which might include graphics, advertising, publishing, fashion, textiles, architecture, interior & industrial design and other arts, crafts, gallery and museum work. An Art A level is a valuable asset whatever your career path or area of further study.

Securing a Place at Post-16

The best foundation for success in A Level Art is a good grade (Level 6) at GCSE Art together with the enthusiasm, commitment and determination to develop your interests and abilities.



Art & Design

Photography Endorsed A Level



Syllabus Code:

9PYO

Contact:

Ms M Williams

Entry Requirements:

6 in Art or 6 in Textiles

Student Course Criteria

This course is for students who have an interest in photography, perhaps with an aptitude in Art, English and Science and wish to develop their analytical and practical skills and their knowledge of photography. Also, for those students who are thinking about careers for which a photographic portfolio might be useful.

Course Overview

Students are given opportunities to develop their knowledge, understanding and skills including:

- Generating and developing ideas
- Researching primary and contextual sources
- Recording practical and written observations
- Exploring materials, processes, technologies and techniques

Course Assessment

2 units over the two years for A Level: Component 1 – Coursework 60%

Component 2 – Externally Set Assignment 40%

Further Opportunities Following this Course

Students can go on to further studies, usually at Art College or further education. These studies may lead to related careers which might include photography, advertising, publishing, media and journalism.

Securing a Place at Post-16

Places on this course are limited, so you need to show a genuine interest. A GCSE in Art is not a requirement but visual awareness and an eye for composition and presentation are an advantage. You do not need your own photographic equipment. A minimum of Level 6 in English or Art is required.



Art & Design

Textiles Endorsed A Level



Syllabus Code:

9TE0

Contact:

Ms S Heath

Entry Requirements:

6 in Art or Textiles

Student Course Criteria

For students who demonstrate an aptitude and interest through the disciplines of textiles for interiors, fine art textiles, fashion textiles, decorative textiles and who wish to further explore and experiment in the creative and practical aspects of the media. Also, for those students who are thinking about careers for which an art, textile, fashion, craft and design background would be relevant.

Course Overview

You will work with a broad range of media in mostly practical activities such as printing, fabric painting, appliqué, batik, embroidery, weaving, yarn and fabric dyeing, painting and drawing. These processes are developed in a highly individual and creative way and will enable you to respond to the visual world in an expressive and imaginative manner. You will develop an awareness of different roles, functions, audiences and consumers of art, craft and design in contemporary and past societies and cultures. You will develop investigative, analytical, experimental, practical, technical and expressive skills, aesthetic understanding and critical judgement. It will also enable students to develop intellectual, imaginative, creative and intuitive capabilities

Course Assessment

Monitoring and assessment take place throughout the course and there are 2 components:

Component 1 – Coursework 60%

Incorporates three major elements: supporting studies, practical work, and a personal study:

- Supporting studies and practical work will comprise a portfolio of development work and outcomes based on themes and ideas developed from personal starting points.
- The personal study will be evidenced through critical written communication showing contextual research and understanding in a minimum 2000 words of continuous prose, which may contain integrated images. The personal study comprises 12% of the total qualification and is marked out of 18.
- Work must cover all four Assessment Objectives.
- Marks available: 90

Component 2 – Externally Set Assignment 40%

Incorporates two major elements: preparatory studies and the 15 hour period of sustained focus:

- Preparatory studies will comprise a portfolio of practical and written development work based on the Externally Set Assignment which contains a theme and suggested starting points.
- During the 15 hour period of sustained focus under examination conditions students will produce final outcome(s) extending from their preparatory studies in response to the Externally Set Assignment.

Further Opportunities Following this Course

Students often go on to further studies in art and design or textiles, usually at Art College or further education. These studies may then lead on to careers in fashion, textiles, jewelry design, costume design, theatre design, interior design or product buying in areas such as fashion and textiles.

Securing a Place at Post-16

The best foundation for success in A Level Textiles is a good GCSE grade in Art and/or Textiles (minimum grade of 6) together with the enthusiasm, commitment and determination to develop your interest and abilities.

Biology

A Level



Syllabus Code:

7402

Contact:

Ms Y Hadjidaniel

Entry Requirements:

6 in Biology or 6-6 in Combined Science
on Higher Paper – also, 6 in English & 6 in Maths

Student Course Criteria

For those students interested in Biology and committed to completing an academic course.

Course Content

- Biological molecules
- Cells
- Organisms exchange substances with their environment
- Genetic information, variation and relationships between organisms
- Energy transfers in and between organisms
- Organisms respond to changes in their internal and external environments
- Genetics, populations, evolution and ecosystems
- The control of gene expression

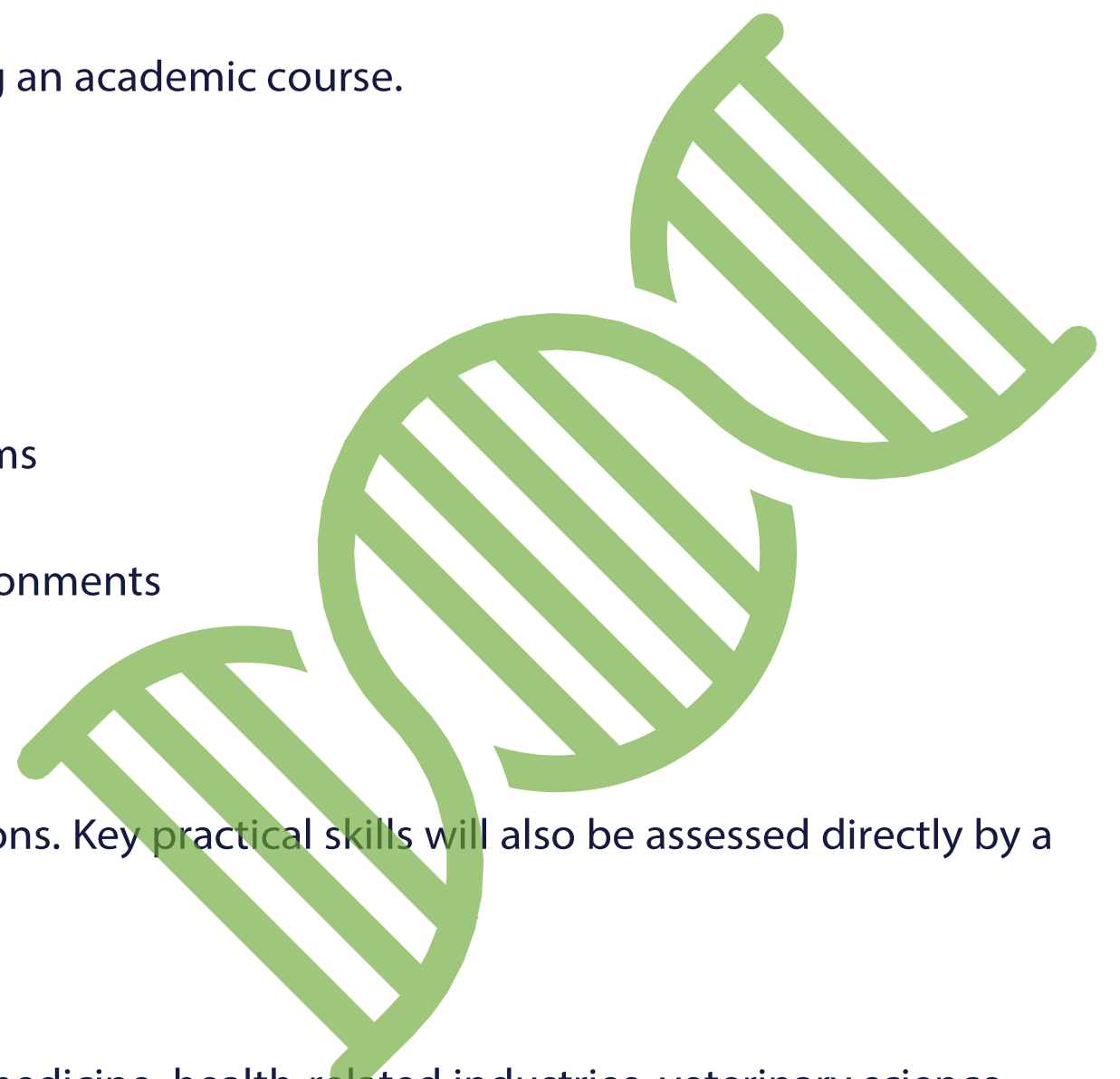
Assessment of content and practical skills is through public examinations. Key practical skills will also be assessed directly by a teacher as part of normal lessons.

Further Opportunities Following this Course

Science related careers following higher education include teaching, medicine, health-related industries, veterinary science, agriculture, horticulture, food science (production, research), conservation, environmental protection, biotechnology, microbiology.

Securing a Place at Post-16

Students must have an interest in and a commitment to Biology. Students should either have grade 6 in Biology or grade 6-6 in GCSE Combined Science. In addition, at least grade 6 in English Language/Literature and a grade 6 in Mathematics will be required.



Business



BTEC L2

Student Course Criteria

This course is suitable for students who have a serious interest in Business. It is primarily designed for learners who wish to pursue a career in business, primarily via higher education to access graduate entry employment with businesses or alternatively through junior business employment.

Course Overview

This course is built on three mandatory units that form the fundamental knowledge and understanding of business principles. Two of the three mandatory units Unit 1: Enterprise in the Business World and Unit 2: Finance for Business appear in all sizes of the BTEC Level 1/Level 2 First qualifications in Business. These qualifications also include a choice of optional specialist units, thereby providing an opportunity to develop a broader understanding of the business sector. In addition it introduces a limited number of specialist areas and the opportunity to acquire some of the practical skills identified by employers as the fundamental building blocks for future competence in the workplace.

Course Content

Students will study a range of units over two years. This includes mandatory units:

- Enterprise in the Business World
- Finance for Business
- Principles of Marketing

And 5 units out of the below optional:

- Promoting a Brand Internal
- Principles of Customer Service
- Sales and Personal Selling
- Introducing Retail Business
- Providing Business Support
- Recruitment, Selection and Employment
- Using Business Documentation
- Building Successful Business Teams
- Introducing Law and Consumer Rights
- Financial Planning and Forecasting
- Business Online

Course Assessment

Students will be assessed through course work assignments and external examinations. Coursework will be internally marked, moderated and externally verified.

Further Opportunities Following this Course

The qualification carries UCAS points and is recognised by higher education providers as contributing to meeting admission requirements to many relevant courses, for example:

- BSc (Hons) in Business and Management
- BA (Hons) in Business and Finance
- BA (Hons) in Business with Human Resource Management
- BA (Hons) and BSc (Hons) in Business Studies
- BSc (Hons) in International Management
- BSc (Hons) or BA (Hons) in Marketing
- BSc (Hons) in Retail Management

Securing a Place at Post-16

You will need to have gained at least 5 GCSEs at grade 4 or above including English Language and Mathematics and a Grade 4 in Science if opting to study the Extended Diploma in Business. (BTEC Tech Award at Merit grade or above will be accepted instead of

Business



BTEC L3

Student Course Criteria

This course is suitable for students who have a serious interest in Business. It is primarily designed for learners who wish to pursue a career in business, primarily via higher education to access graduate entry employment with businesses or alternatively through junior business employment.

Course Overview

These are vocational level 3 qualifications available in Business:

Extended Certificate	Equivalent to 1 A Level	Units (1,2,3,8 and 14)
Diploma	Equivalent to 2 A Levels	Units (1,2,3,4,5,6 and 3 more)
Extended Diploma	Equivalent to 3 A Levels	Units (1,2,3,4,5,6,4 and 4 more)

Syllabus Code:

Extended Certificate: 360GLH

Diploma: 720GLH

Extended Diploma: 1080GLH

Contact:

Ms D Bastienne

Entry Requirements:

5 GCSEs at Level 4 or above inc English and Maths or Science

Course Content

Students will study a range of units over two years. This includes mandatory units:

- Exploring Business
- Developing a Marketing Campaign
- Personal and Business Finance
- Managing an Event
- International Business
- Principles of Management
- Business Decision Making

Course Assessment

Students will be assessed through course work assignments and external examinations. Coursework will be internally marked, moderated and externally verified.

Further Opportunities Following this Course

The qualification carries UCAS points and is recognised by higher education providers as contributing to meeting admission requirements to many relevant courses, for example:

- BSc (Hons) in Business and Management
- BA (Hons) in Business and Finance
- BA (Hons) in Business with Human Resource Management
- BA (Hons) and BSc(Hons) in Business Studies
- BSc (Hons) in International Management
- BSc (Hons) or BA (Hons) in Marketing
- BSc (Hons) in Retail Management.

Students can go directly into employment. Areas of employment include junior roles in marketing, administration, finance, financial services, procurement, events management, human resources and other related areas in the business sector

Securing a Place at Post-16

You will need to have gained at least 5 GCSEs at grade 4 or above including English Language and Mathematics and a Grade 4 in Science if opting to study the Extended Diploma in Business. (BTEC Tech Award at Merit grade or above will be accepted instead of one GCSE at grade 4 or above).

Chemistry

A Level



Syllabus Code:

7405

Contact:

Ms Y Hadjidaniel

Entry Requirements:

6 in Chemistry or 6-6 in Combined Science on Higher Paper – also, 5 in English & 6 in Maths

Student Course Criteria

Students must have an interest in and a commitment to the subject. This will appeal to students wishing to follow a career in any of the sciences, medicine, dentistry, veterinary or physical geography.

Course Content

3.1 Physical chemistry

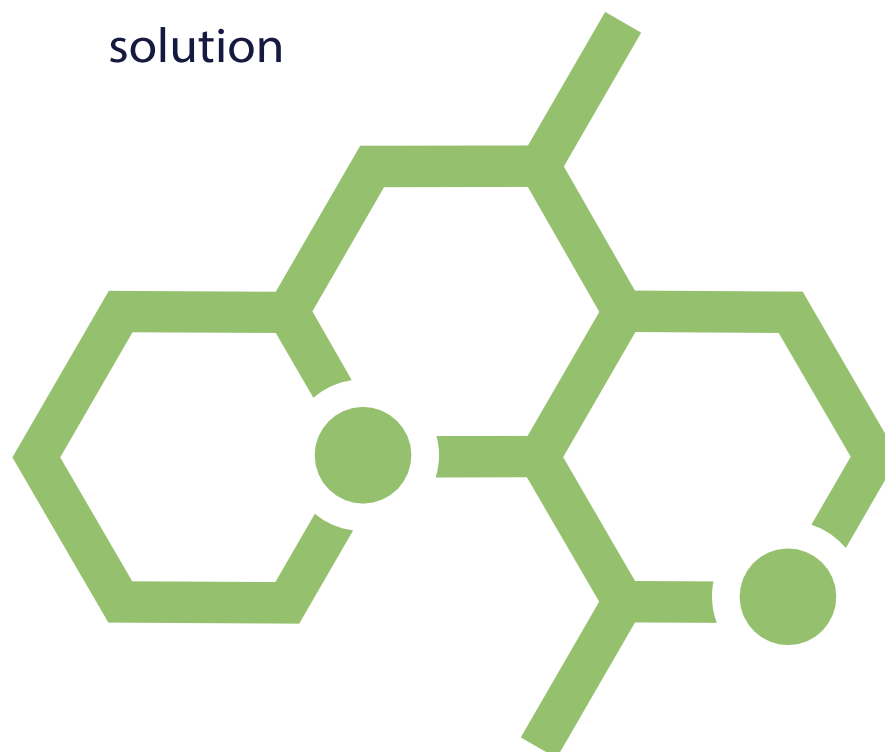
- 3.1.1 Atomic structure
- 3.1.2 Amount of substance
- 3.1.3 Bonding
- 3.1.4 Energetics
- 3.1.5 Kinetics
- 3.1.6 Chemical equilibria, Le Chatelier's principle and K_c
- 3.1.7 Oxidation, reduction and redox equations
- 3.1.8 Thermodynamics
- 3.1.9 Rate equations
- 3.1.10 Equilibrium constant K_p for homogeneous systems
- 3.1.11 Electrode potentials and electrochemical cells
- 3.1.12 Acids and bases

3.2 Inorganic chemistry

- 3.2.1 Periodicity
- 3.2.2 Group 2, the alkaline earth metals
- 3.2.3 Group 7(17), the halogens
- 3.2.4 Properties of Period 3 elements and their oxides
- 3.2.5 Transition metals
- 3.2.6 Reactions of ions in aqueous solution

3.3 Organic chemistry

- 3.3.1 Introduction to organic chemistry
- 3.3.2 Alkanes
- 3.3.3 Halogenoalkanes
- 3.3.4 Alkenes
- 3.3.5 Alcohols
- 3.3.6 Organic analysis
- 3.3.7 Optical isomerism
- 3.3.8 Aldehydes and ketones
- 3.3.9 Carboxylic acids and derivatives
- 3.3.10 Aromatic chemistry
- 3.3.11 Amines
- 3.3.12 Polymers
- 3.3.13 Amino acids, proteins and DNA
- 3.3.14 Organic synthesis
- 3.3.15 Nuclear magnetic resonance spectroscopy
- 3.3.16 Chromatography



Course Assessment

Chemistry is a skill-based subject so that many examinations will include work studied in other parts of the course. Assessment of content and practical skills is through public examinations. Key practical skills will also be assessed directly by a teacher as part of normal lessons.

Further Opportunities Following this Course

Following higher education, any science related career e.g. medicine, pharmacy, pharmacology, veterinary science, cosmetic and perfume science, chemical and other forms of engineering, material science and forensic science. Any career which values skills acquired in this subject.

Securing a Place at Post-16

Students must have an interest in and a commitment to Chemistry. Students should either have grade 6 in Chemistry or grade 6-6 in GCSE Combined Science. In addition, at least grade 5 in English Language/Literature and a grade 6 in Mathematics will be required.

Classical Civilisation

A Level



Syllabus Code:

H408

Contact:

Mr Matthai

Entry Requirements:

6 in English and Classical Civilisation
or any other Humanities Subject

Student Course Criteria

Classical Civilisation is an exciting and rewarding study of the ancient world. It is the study of Ancient Greece and Rome and their neighbours, deep diving into their cultures, beliefs and values. These ancient civilisations have had a huge influence on many aspects of the world today and students of the discipline will be encouraged to consider how these ancient peoples contributed to our modern societies and our values. Unique to Classical Civilisation is the opportunity to study a variety of different topics via diverse mediums. Classical Civilisation involves the study of History, Literature, Philosophy, Politics, Sociology, Art and Archaeology via both literary and visual material. You do not need knowledge of Ancient Greek or Latin as all texts are taught in translation. However, the course provides opportunities to learn and use ancient vocabulary to aid students' understanding of ancient cultures, practices, and values.

The course is ideal for students who are: curious about different people and cultures; ready to question, challenge, explore and learn about themselves and the world around them; who enjoy different forms of expression such as poetry, pottery, speech-giving, statues and architecture; who are hard-working and value the freedom to learn and research beyond the classroom; who are aspirational and value stretching themselves above and beyond.

At Enfield County School for Girls we feel a sense of pride at being able to offer such an exciting opportunity to prospective students.

Course Overview/Assessment

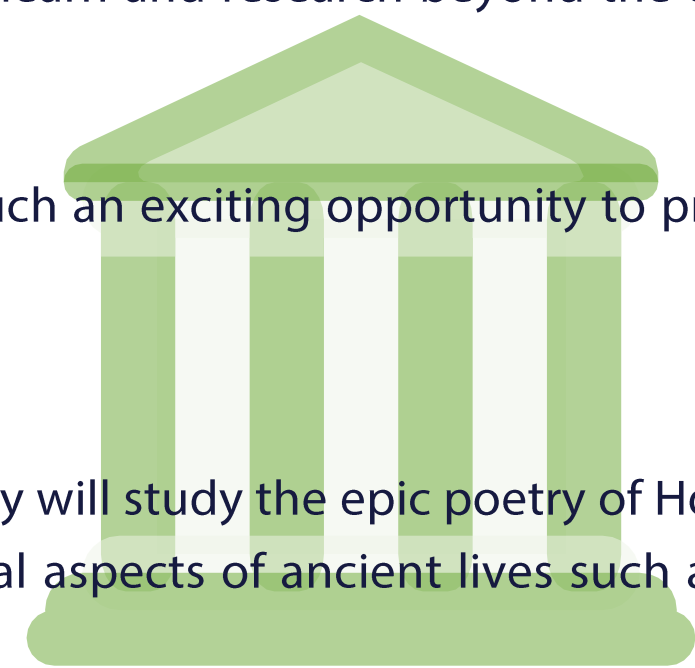
Students will study a range of art, architecture, archaeology, poetry and prose. They will study the epic poetry of Homer and Virgil, considering what it means to be a 'hero', while also exploring other cultural aspects of ancient lives such as politics, art and theatre. This is an exam based A Level comprising of three exams.

Further Opportunities Following this Course

Classical Civilisation is widely recognised as a prestigious and well-respected qualification in both higher education and the professional world. It complements a range of subjects at degree level within the arts and humanities while also showing diversity of interest in those hoping to pursue courses in the sciences and medical fields. The course serves particularly valuable to students seeking careers in law, politics, finance, public relations, advertising, marketing, communication and journalism.

Securing a Place at Post-16

Those who have studied English Literature and Classical Civilisation, or English Literature and a related humanities subject will find that the skills they have developed in these subjects will prove valuable in their study of Classical Civilisation A Level. We require a Level 6 or above in English Literature and a Level 6 or above in Classical Civilisation GCSE or another humanities subject.



Economics

A Level



Syllabus Code:

9ECO

Contact:

Mrs W Nyakpenu

Entry Requirements:

6 in Mathematics and English

Student Course Criteria

Economics enables students to explain the decisions we make in the world we live in. By exploring historical theories and their application in real life context, students are able to understand how society is able to answer the basic economic problem of infinite wants and limited resources.

Students will be able to build an understanding of core concepts of microeconomics and macroeconomics and apply this theory to the business environment. You will be able to apply models to topics such as government policy and globalisation in Year 13 and apply these to current issues such as the global pandemic and its impact on the economy.

At Enfield County School for Girls you will be able to develop a critical and analytical approach to learning Economics and be able to see everyday issues through the perspective of an economist. You will also be able to develop quantitative and analytical skills that are transferrable and highly desirable in the working industry.

Lessons will be varied using resources from websites, past papers, articles, guest speakers and educational visits if and when appropriate. Learning Economics will help you to become a well-rounded, analytical and critical thinker. The department looks forward to facilitating students to become future economists.

Course Overview/Assessment

Students will study four themes covered over the two years:

- Theme 1: How markets work
- Theme 2: How the economy works
- Theme 3: How businesses compete
- Theme 4: Globalisation

This is an exam-based A Level comprising of three exams.

Further Opportunities Following this Course

Economics is widely recognised as a prestigious and well-respected qualification in both higher education and the professional world. It complements a range of subjects at degree level within the humanities. Students who study Economics at A level typically go on to study courses such as Economics, Business, Business Management, Finance and Accounting

Securing a Place at Post-16

To study Economics at A Level, we require a Level 6 or above in both Mathematics and English Language.



English Language

A Level

edexcel 



Syllabus Code:

9EN01

Contact:

Ms H Coles

Entry Requirements:

6 in English

Student Course Criteria

The course is suitable for those students who wish to develop their knowledge about language. There will be the opportunity to study modern texts, including media texts, and texts from the past. Students will need to be prepared to study concepts and frameworks for the study of language and to develop their skills in speaking, analysing and writing for different purposes and audiences.

Course Overview

Students will study a wide range of spoken, written and multimodal texts. As observers, readers and writers, students will be inspired by learning about spoken and written language from real and imagined worlds and they will engage with the craft of writing to create their own texts. The exams focus on Language Variation, Child Language and Investigating Language. The coursework involves producing writing for different audiences and functions.

Course Assessment

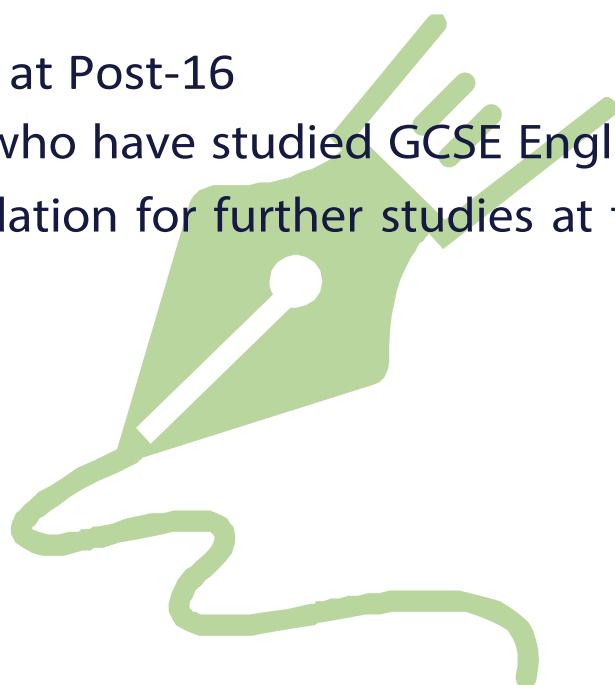
The course is assessed through examinations and coursework.

Further Opportunities Following this Course

English language is a popular qualification for a wide range of courses in higher education or for further study; it is directly valuable in areas which require sound communication skills and an expert knowledge of different audiences such as publishing, journalism, media and education.

Securing a Place at Post-16

Those students who have studied GCSE English language and literature will find that the skills they have learned will prove a valuable foundation for further studies at this level. We require GCSE grade 6 or above in English language and English Literature.



English Literature

A Level



Syllabus Code:

SPEC A

Contact:

Ms H Coles

Entry Requirements:

6 in English



Student Course Criteria

It is appropriate for those students who wish to broaden their minds, enjoy reading and wish to pursue their own interests in literature. Students who wish to develop their ability to assess texts, analyse prose and poetry as well as productions of plays and to communicate their ideas and opinions effectively in writing will benefit from the course.

Course Overview

Students will study a range of Poetry, Prose and Drama covering aspects of love from love to World War One. They will have the opportunity to produce coursework and to improve their skills in textual analysis of both prepared and unseen texts. Lessons are directed to individual modes of study as well as group interaction in the form of discussion and role-play.

Course Assessment

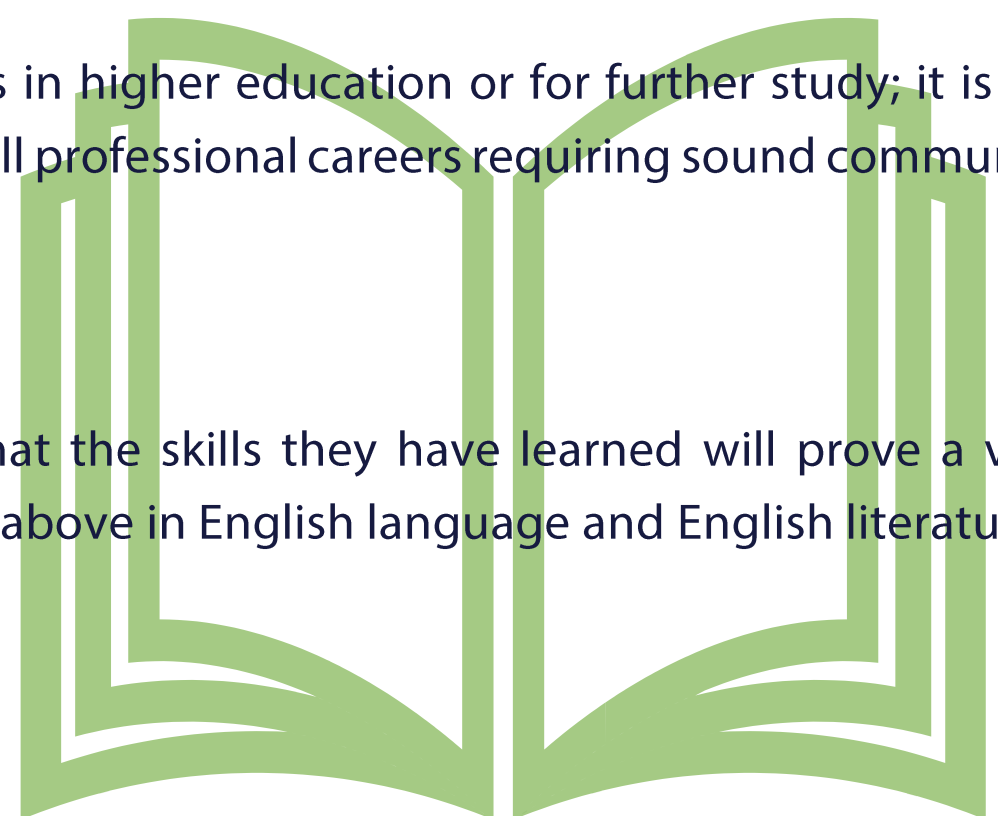
The course is assessed through examinations and coursework.

Further Opportunities Following this Course

English literature is a popular qualification for a wide range of courses in higher education or for further study; it is directly valuable in areas such as education, publishing, journalism, media and all professional careers requiring sound communication skills.

Securing a Place at Post-16

Those students who have studied GCSE English literature will find that the skills they have learned will prove a valuable foundation for further studies at this level. We require GCSE Grade 6 or above in English language and English literature.



Film Studies

A Level



Syllabus Code:

H410

Contact:

Ms A Crowley

Entry Requirements:

6 in English

Student Course Criteria

This course is suitable for students who already have an interest in film and who want to develop that further by exploring how film is constructed to create meaning and effects. If you enjoy the type of analytical work that we do in English lessons and would like to use those skills in another medium, learn about the history and get practical making your own, then this is the course for you.

Course Overview

Film Studies is an engaging and exciting subject that gives students an opportunity to develop a critical perspective of this popular medium and the role it plays within contemporary society. Students gain an appreciation of film as an art form in terms of its visual storytelling whilst also exploring how values, attitudes, ideas, and beliefs are communicated in film. Students are introduced to key theories in relation to film including aesthetics, spectatorship, representation, ideology, genre and auteurism. Students will investigate and explore various critical debates ranging from film poetics to realism and expressionism. We study films from a broad range of historical and cultural contexts as well as different genres and students develop their critical thinking and analytical skills to write perceptive and thoughtful personal responses to film. This course also includes a creative production element in which students work independently and collaboratively to make a short film or write a screenplay.

Assessment

Component 1 – Film History – Written exam 2 hours 105 marks – 35 %

Section A - Film form in the US (3 questions; 10, 10 and 35 marks)

Section B – European Film History (2 questions; 15 and 35 marks)

Component 2 – Critical Approaches to Film – Written exam 2 hours 105 marks- 35%

Section A - Contemporary British and US Film – 1 essay 35 marks

Section B – Documentary – 1 essay 35 marks

Section C – Ideology - 1 essay 35 marks

Non-Examined Assessment (Coursework) 90 marks - 30%

Students will produce a short film of 4-5 minutes (as well as a digital storyboard) or write a screenplay of 10 minutes. 30 marks are given to an evaluation of their production.

Further Opportunities Following this Course

Film Studies A Level provides an excellent introduction to the study of film or media at higher education. It complements a range of subjects at degree level from the arts and humanities. This course would be particularly valuable to those seeking a career in the fields of journalism, writing, advertising, and marketing, publishing, media, and film production.

Securing a Place at Post-16

The most successful students in A Level Film studies have a minimum grade 6 in English Language.



French

A Level



Syllabus Code:

7652

Contact:

Mlle M Poncelet

Entry Requirements:

7 in French

Student Course Criteria

The course will appeal to students who have enjoyed French and achieved a high standard at GCSE level and who wish to develop their linguistic skills alongside their understanding of the culture and society of countries where French is spoken.

Year 1 - Subject Content:

- Aspects of French-speaking society: The changing nature of the family; The 'cyber-society'; The place of voluntary work
- Artistic culture in the French-speaking world: A culture proud of its heritage; Contemporary francophone music; Cinema – the 7th art form
- Literary texts and films: Either one text or one film from the lists in the AQA specification
- Grammar

Year 2 – Subject Content:

- Aspects of French-speaking society (trends): The changing nature of the family; The 'cyber-society'; The place of voluntary work
- Aspects of French-speaking society (issues): Positive features of a diverse society; Life for the marginalised; How criminals are treated
- Artistic culture in the French-speaking world: A culture proud of its heritage; Contemporary francophone music; Cinema – the 7th art form
- Aspects of political life in the French-speaking world: Teenagers, the right to vote and political commitment; Demonstrations, strikes – who holds the power?; Politics and immigration
- Grammar

Literary texts and films: Either one text and one film or two texts from the lists in the AQA specification.

Individual research project: The student identifies and researches an area of interest to them which relates to a country or countries where French is spoken.

Assessment:

Paper 1: Listening, reading and writing (40% of the A-level)

Paper 2: Writing (30% of the A-level)

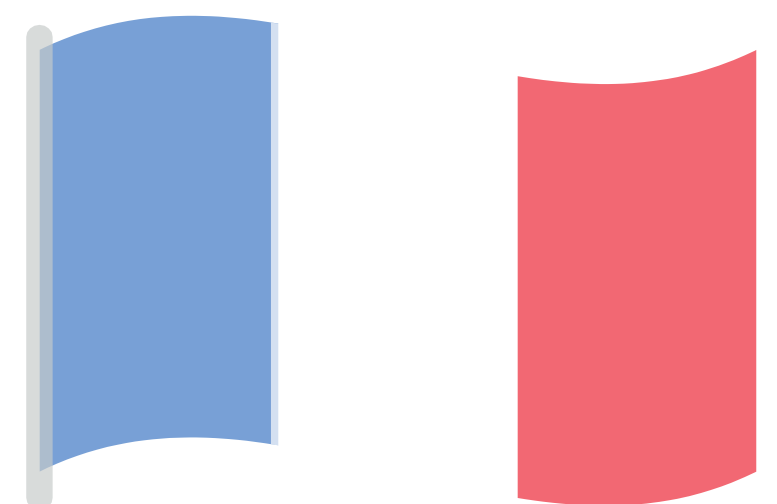
Paper 3: Speaking test (30% of the A-level)

Further Opportunities Following this Course

As well as leading to the obvious degree courses in languages and jobs using languages, an A Level qualification can be extremely useful in any career as knowledge of languages is a sought-after skill in all walks of life.

Securing a Place at Post-16

We require a GCSE French grade 7 or above.



Geography

A Level



Syllabus Code:

7037

Contact:

Mr J Barrow

Entry Requirements:

6 in Geography



Student Course Criteria

Geographers have a particular way of looking at the world. The AQA Geography A Level course invites students to critically evaluate and assess links between topics. The ability to weigh up differing and conflicting views is an essential part of the course as well as developing and extending students' application of the interrelationships between physical and human geography.

Any student who has taken geography at GCSE and has shown a commitment to their studies and a good understanding of work covered is welcome to apply for this popular and high achieving subject.

	What is assessed	How it is assessed
Physical Geography	Water and Carbon Cycles, Hazards, Coastal systems and landscapes	Written exam 2 hours 30 minutes 40% of A-Level
Human Geography	Changing Places, Global Systems and global governance	Written exam 2 hours 30 minutes 40% of A – Level
Geographical Investigation	Completion of an individual investigation based on a question of issue with data collected in the field.	3000 – 4000 words 20% of A-Level Marked by teachers, moderated by AQA

Geography Fieldwork Investigation

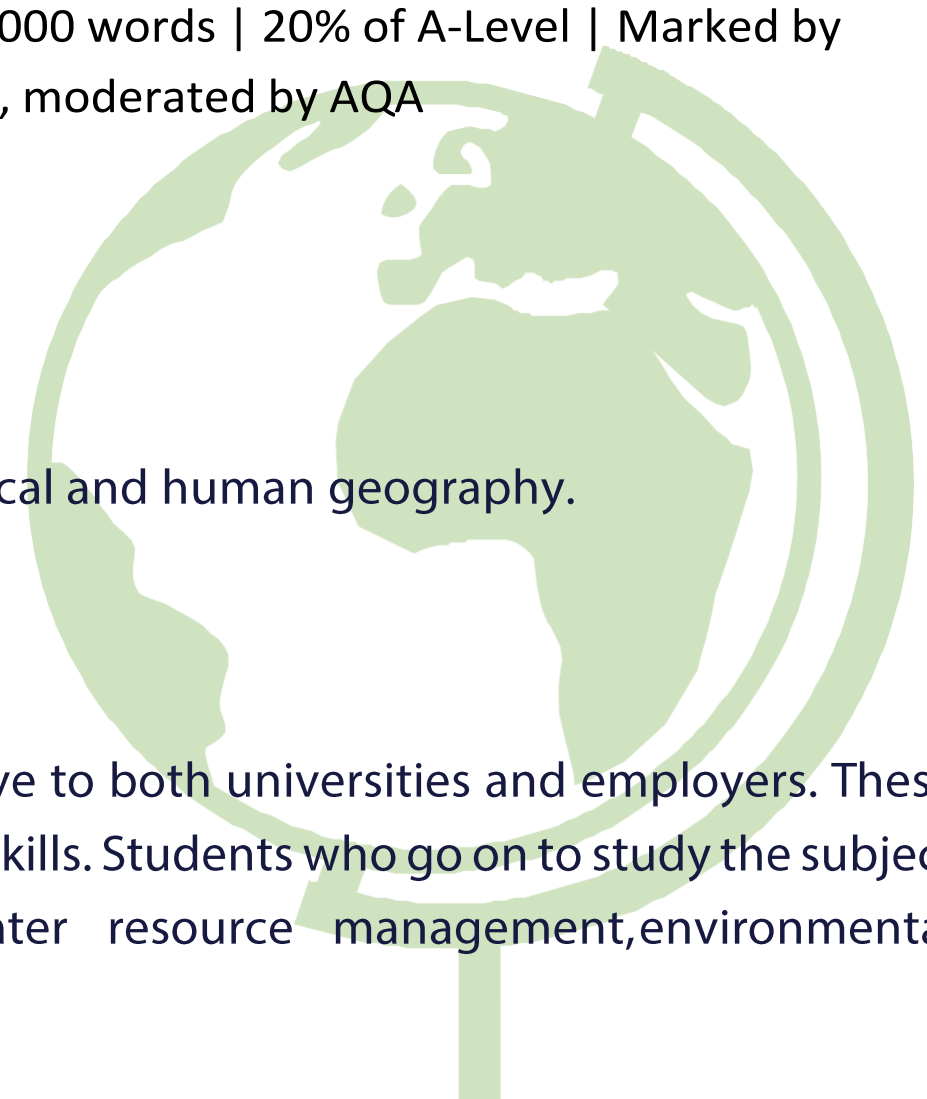
All students are required to undertake fieldwork in relation to processes in both physical and human geography.

Further Opportunities Following this Course

Studying Geography provides young people with a mix of skills that is highly attractive to both universities and employers. These skills include numeracy, teamwork, data handling, analytical skills and communication skills. Students who go on to study the subject at degree level find employment in a wide range of professions, for example water resource management, environmental consultancy, urban planning and journalism.

Securing a Place at Post-16

A minimum of grade 6 in Geography is required. Please note there is a mathematical element to the course.



History

A Level



Syllabus Code:

9H10

Contact:

Mr E Lloyd

Entry Requirements:

6 in any Humanities subject

Student Course Criteria

The course will appeal to students who:

- Have a passion to learn about the world we live in and how particular areas have shaped the way we live today
- Enjoy investigation and discovery
- Enjoy debating, reading and researching
- Want to make a difference to the society we live in
- Want to keep their options open, as History is widely regarded as a qualification for a wide range of higher education or career choices.

Course Overview

During your course you will learn:

- About what specific individuals have done to change the way we live
- How political systems have changed in our country and internationally, examining similarities and differences
- Gain a deep understanding of who we are
- Where political power lies in society and how it impacts everyone
- About the significance of key events, individuals, issues and diverse societies in our studies and gain a richer understanding of how we fit into it
- What causes change over time and the consequences causes have had
- About the theories of historians and the language they use to discuss their ideas
- To understand the nature of historical evidence and the methods used by historians to analyse and evaluate it
- To develop an understanding of how the past has been interpreted and represented
- To express your own historical ideas confidently and effectively

Further Opportunities Following this Course

Students who study A Level History have access to a wide range of career and higher education opportunities. By the end of your course you will have learnt how to evaluate and analyse information, how to weigh up evidence and how to communicate complex ideas effectively. These skills are recognised and valued by employers, universities and colleges.

Combined with English and a modern foreign language it would provide a good basis for an arts or languages-based degree. History provides an excellent foundation for a number of popular careers including journalism, law and business.

Securing a Place at Post-16

We require a Grade 6 or above in History.

The students who have studied GCSE History will find that the skills they have learned and the knowledge they have acquired will form a solid foundation for further studies at A level.

CONT. HISTORY TOPICS NEXT PAGE

Year 12 Topics

2F.2: South Africa, 1948–94: from apartheid state to ‘rainbow nation’:

This option comprises a study in depth of South Africa during its transition from white minority rule to the free elections of 1994, a long, and at times, dramatic process in which South Africa changed from an apartheid state into a multi-racial democracy. Students will gain an in-depth understanding of the creation and consolidation of the apartheid regime by the National Party and the response and methods used by their political opponents in the struggle to overthrow apartheid, as well as social, economic and cultural changes that accompanied this process.

36.1: Protest, agitation and parliamentary reform in Britain, c1780–1928:

This option comprises two parts: the Aspects in breadth focus on long-term changes and contextualise the Aspects in depth, which focus in detail on key episodes. Together, the breadth and depth topics explore the relationship between authority and mass agitation in England, the struggle for greater representation in England and the ways in which the interests and concerns of individuals in society could make themselves known. Within the primarily political focus, this option also gives students the opportunity to explore the economic and social contexts and their influence on developments and on the pressures for change.

Year 13 Topics

4 Coursework – Origins of the First World War:

The purpose of this coursework is to enable students to develop skills in the analysis and evaluation of interpretations of history in a chosen question, problem or issue as part of an independently researched assignment. The focus is on understanding the nature and purpose of the work of the historian. Students will be required to form a critical view based on relevant reading on the question, problem or issue. They will also be specifically required to analyse, explain and evaluate the interpretations of three historians.

1F: In search of the American Dream: the USA, c1917–96:

This option comprises a study in breadth, in which students will learn about the dramatic political, economic and social transformation of the USA in the twentieth century, an era that saw the USA challenged by the consequences of political, economic and social inequalities at home and of its involvement in international conflict. The focus of study is on developments and changes over a broad timescale and so the content is presented as themes spanning a significant duration: 1917-80. This option also contains a study in depth of historical interpretations on a broad question which is contextualised by, and runs on from, the theme: what was the impact of the Reagan presidency on the USA in the years 1981–96.



Mathematics

A Level



Syllabus Code:

9MA0

Contact:

Mr O Virciglio

Entry Requirements:

7 in Maths plus a 70% pass in the September Entrance Test

Course Overview

The A Level course is offered on a linear basis. Over two years the following modules are offered:

- Mathematics 1
- Mathematics 2
- Statistics and Mechanics

Course Assessment

Three external examinations at the end of Year 13

Further Opportunities Following this Course

Mathematics is a versatile qualification, well-respected by employers and is a facilitating subject for entry to higher education. Careers for people with good mathematical skills and qualifications are not only well paid but they are often interesting and rewarding. People who have studied Mathematics are in the fortunate position of having an excellent choice of careers. Whilst the number of younger people studying Mathematics is increasing there is still a huge demand from science, engineering and manufacturing employers.

The reason why so many employers highly value mathematics qualifications is that students become better at thinking logically and analytically. Through solving problems, they develop resilience and are able to think creatively and strategically. The writing of structured solutions, proof and justification of results helps them to formulate reasoned arguments. Students will also need to have excellent numeracy skills and the ability to process and interpret data.

Securing a Place at Post-16

You will need a minimum of grade 7 in Mathematics GCSE and pass an entrance exam (70% or higher) in the first week of the course at the beginning of the Autumn Term.

Music

A Level



Syllabus Code:

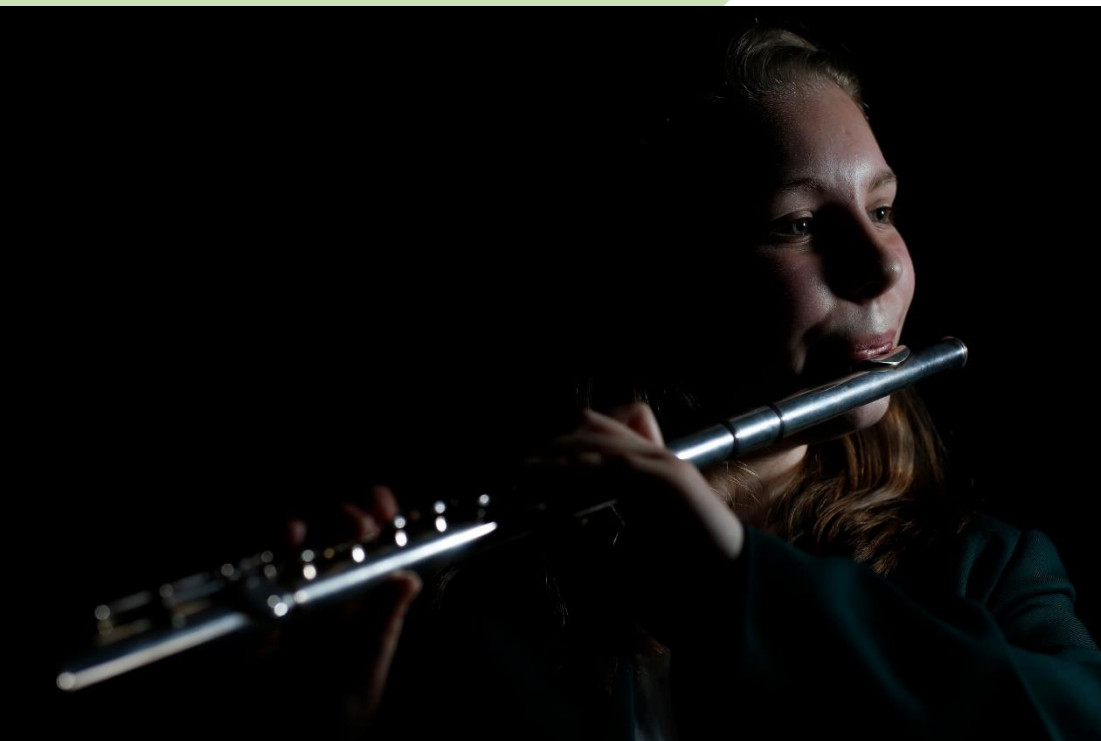
H453

Contact:

Ms E McGinley

Entry Requirements:

6 in Music



Student Course Criteria

Students who have an interest and aptitude in Music, and who enjoy listening to and analysing a range of different styles of music. Students should be proficient in an instrument/voice, and should aim to be at minimum performance standard Grade 7 (ABRSM) by the end of Year 13.

Course Overview

Music at A Level is divided into three sections: Performance, Composition and Listening & Appraising. Students can choose to major in either Performance or Composition, depending on individual strengths.

Course Assessment

Coursework 60% (either 35% Performance and 25% Composition; or 25% Performance and 35% Composition); Listening and Appraising written exam 40%.

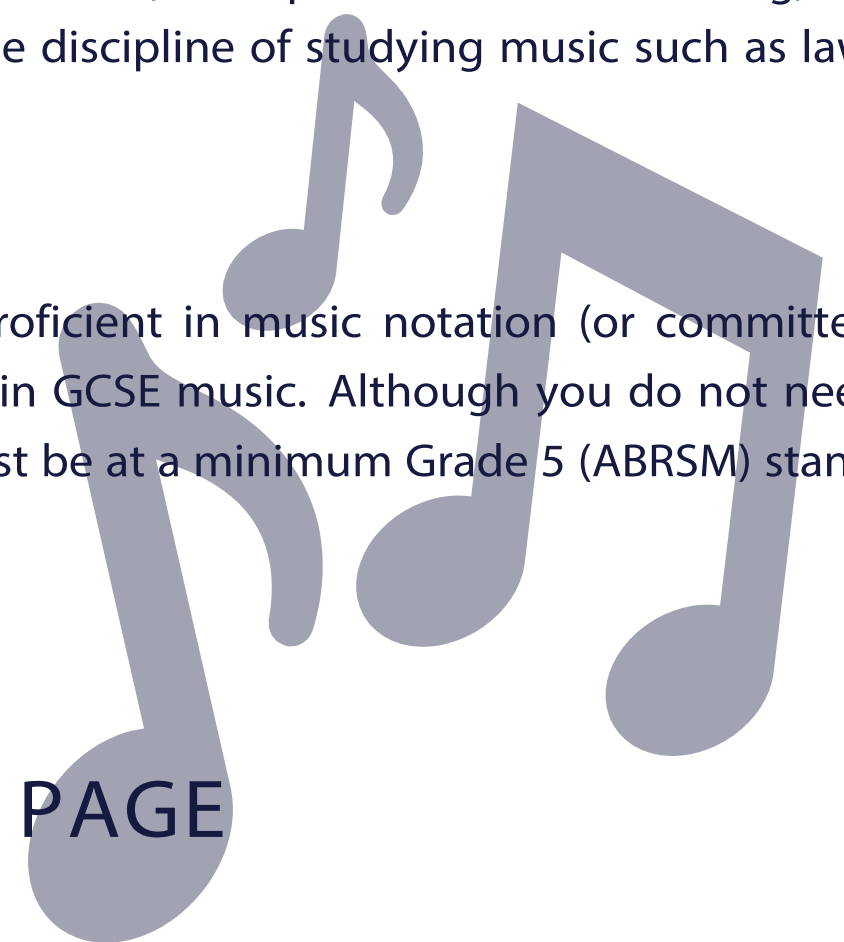
Further Opportunities Following this Course

Students often go on to further studies in music, either at University or at a Music Conservatoire. These studies lead to many related careers, which might include performer, music education, arts administration, theatre work, A&R promotion and booking, artist management, music producer, music therapy, and many unrelated fields that value the discipline of studying music such as law or finance.

Securing a Place at Post-16

Students must have a commitment to studying different styles of music, and be proficient in music notation (or committed to developing your proficiency in music notation). You will need a minimum of grade 6 in GCSE music. Although you do not need to have taken formal music grade exams in your instrument, your playing/voice skills must be at a minimum Grade 5 (ABRSM) standard by the end of Year 11.

CONT. MUSIC TOPICS NEXT PAGE



Course Overview

Either Option 1:

Recital minimum of 6 minutes and two contrasting pieces.

Recital 75 Marks Non-exam assessment –
externally assessed via audio-visual recording
25% of total A level

25% of total A level

Compositions with a combined duration
of at least 8 minutes

- One to a brief set by OCR
- One to a brief written by the learner
- Three short technical exercises

Compositions accompanied by a score, lead
sheet or written description
105 Marks
Non-exam assessment – externally assessed
via audio recordings

35% of total A level

Or Option 2:

Recital – minimum of 10 minutes and
three contrasting pieces.

Section 1: Free Choice

Section 2: Focused Study

Recital
105 Marks
Non-exam assessment – externally assessed
via audio-visual recording

35% of total A level

Compositions with a combined duration
of at least 4 minutes

- One to a brief set by OCR
- One to a brief written by the learner

Compositions accompanied by a score, lead
sheet or written description
75 Marks
Non-exam assessment – externally assessed
via audio recordings

25% of total A level

Listening and appraising exam

- Analysing and evaluating music
- Familiar and unfamiliar pieces
- Prescribed works
- Questions based on aural extracts

Written exam including aural extracts
120 Marks
2 hour and 30 minutes written exam

40% of total A level

Philosophy

A Level



Syllabus Code:

7172

Contact:

Mrs L McGinness

Entry Requirements:

6 in English

Course Content

- Epistemology
- Moral Philosophy
- Metaphysics of God
- Metaphysics of mind

How is it assessed?

1. Written exam – 3 hours (100 marks)

Section A: Five questions on Epistemology

Section B: Five questions on moral philosophy

2. Written exam – 3 hours (100 marks)

Section A: Five questions on the metaphysics of God

Section B: Five questions on the metaphysics of mind

Further Opportunities Following this Course

A Level Philosophy is relevant to all BA and BSc degrees as it involves religions, history, politics, literature, sociology, science and ethics etc. Philosophy is popular with employers as it shows an ability to work with and understand other people, ideas, culture, opinions, ways of life etc.

Securing a Place at Post-16

No previous study of Religious Studies is necessary. We require enthusiasm and an inquiring mind. However, you should have achieved a good range of GCSE grades including a grade 6 in English as Philosophy contains many different disciplines.



Physics

A Level



Syllabus Code:

7408

Contact:

Ms De Freitas

Entry Requirements:

7 in Physics or 7-7 Combined Science

5 in English and 7 in Maths

Student course criteria

For those students interested in Physics and committed to completing an academic course.

Course content:

- Particles and radiation
- Waves
- Mechanics and Materials
- Electricity
- Further mechanics and thermal physics
- Fields and their consequences
- Nuclear physics

Options:

- Astrophysics or Medical Physics

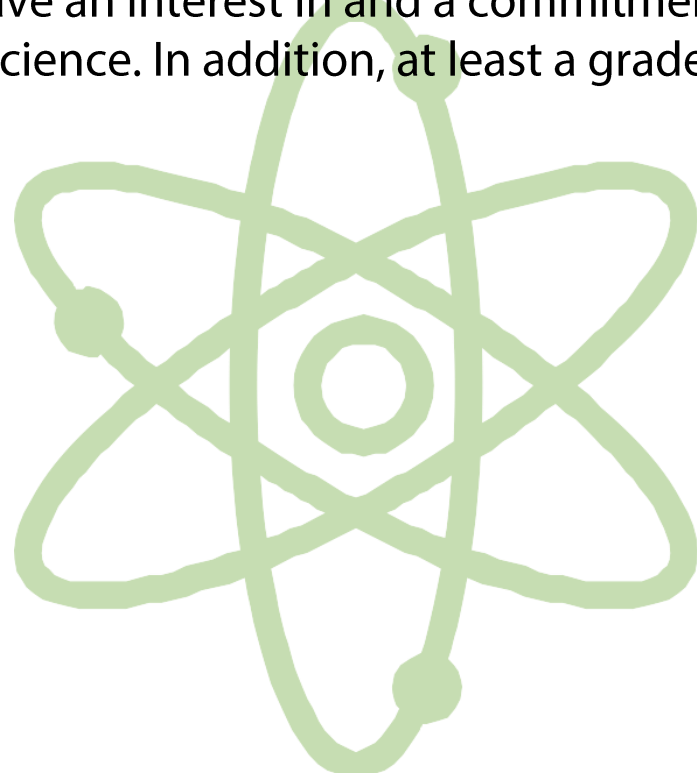
Assessment of content and practical skills is through public examinations. Key practical skills will also be assessed directly by a teacher as part of normal lessons.

Further opportunities following this course:

Science related careers following higher education including teaching, engineering, astronomy, space exploration, games development, modelling the climate and architecture. Students can also go into non-physics careers after higher education such as finance.

Securing a place at post-16

Students must have an interest in and a commitment to Physics. Students should have a grade 7 in physics or 7-7 in combined science. In addition, at least a grade 5 in English language/Literature and a grade 7 in Mathematics will be required.



Politics

A Level



Syllabus Code:

9PLO

Contact:

Mr E Lloyd

Entry Requirements:

6 in any Humanity Subject

Student Course Criteria

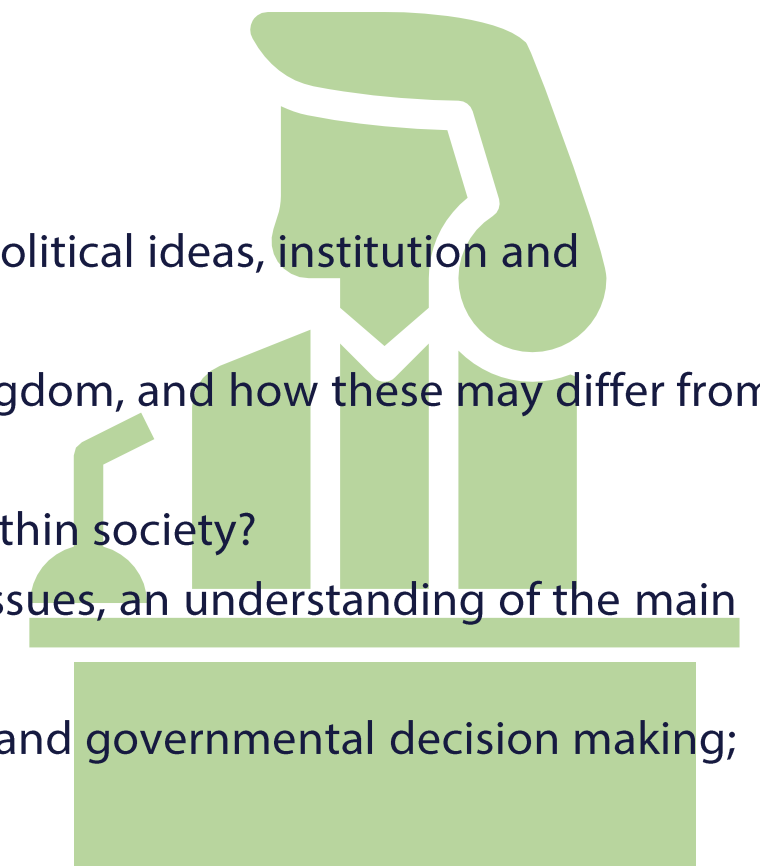
This course will appeal to students who:

- Have an interest in current affairs and wish to understand the political background.
- Like doing a subject that affects their everyday lives; analysis and decision making, discussion and debate are integral to the course
- Appreciate the need to understand and take part in decision making.
- Want to keep their options open – Politics can be a useful choice for a wide range of careers and broadens your choice across humanity subjects, while combining with other areas. A qualification in politics is highly regarded because of the skills and knowledge it develops.
- Have a keen interest in history and wish to study a complementary subject.

Course Overview

During your course you will learn:

- How to develop a critical awareness of the nature of politics and the relationship between political ideas, institution and processes.
- What the structures of authority and power are within the political system of the United Kingdom, and how these may differ from other political systems, particularly USA and Europe.
- What are the rights and responsibilities of individuals in order to encourage participation within society?
- How to develop personal effectiveness through a critical awareness of political events and issues, an understanding of the main political viewpoints and the skills required to argue a case with relevance and coherence
- A clear understanding of the theories, motives and values that underpin political processes and governmental decision making; the role of institutions in resolving conflicts



Further Opportunities Following this Course

Students with A Level Politics have access to a wide range of possible career and higher education opportunities. You will learn and use a variety of transferable skills of communication, problem solving, working with others, which improve your own performance. Most importantly you will learn how to analyse complex texts and ideas and construct arguments in essays. These skills are in great demand and are recognized by employers, universities and colleges as being of great value, the subject combines well with a range of social science and humanities subjects, leading on to courses in business, economics, law, media, philosophy, history and politics.

Securing a Place at Post 16

Students need to have a grade 6 in History or if this subject has not been taken any humanities subject including Sociology or Religious Studies with a grade 6 or above.

CONT. POLITICS TOPICS NEXT PAGE

ONWARD EVER



The A Level Politics consists of three components based on the following content:

Year 12

Component 1: UK Politics

This component introduces students to the study of politics by looking at the central ideas of citizenship, democracy and participation and by examining the representative processes in the UK. The main topics covered are: democracy and political participation, party policies and ideas, elections, pressure groups, electoral systems and the media. We will also study three core political ideas – 1) Socialism 2) Liberalism 3) Conservatism.

Component 2: UK Government

This component provides an introduction to the major institutions of UK Government and examines their relationships with one another and considers their effectiveness. The main topics covered are: The UK Constitution, The Role and Significance of Parliament, The Prime Minister and Cabinet. We will also study one non-core political idea, Feminism.

Year 13

Component 3: Comparative Politics

This component looks at the USA's elections and voting, Political Parties, Racial and Ethnic Politics, Pressure Groups and political systems. We study the US Constitution and Federalism, US Congress, US President, US Supreme Court and civil rights, democracy and participation, comparative theories.



Psychology

A Level



Syllabus Code:

7182

Contact:

Mr D Bryan

Entry Requirements:

6 in English and 6 in Science or 6 in Mathematics

Student Course Criteria

For those students with a genuine interest in studying the mind and behaviour and who enjoy exploring issues dealing with how, and why, people behave in certain ways.

Course Overview

The A level is two years in length.

First Year:

Topics include: Social Influence, Memory, Attachment, Approaches in Psychology, Psychopathology, Research Methods, and Biopsychology.

Second Year:

Topics include: all of the topics above (plus Issues and Debates. Also one topic from each option below.

Option 1

Relationships

Gender

Cognition

Option 2

Schizophrenia

Eating Behaviour

Stress

Option 3

Aggression

Forensic Psychology

Addiction

Course Assessment

The A level qualification is assessed through three written papers at the end of the second year of study.

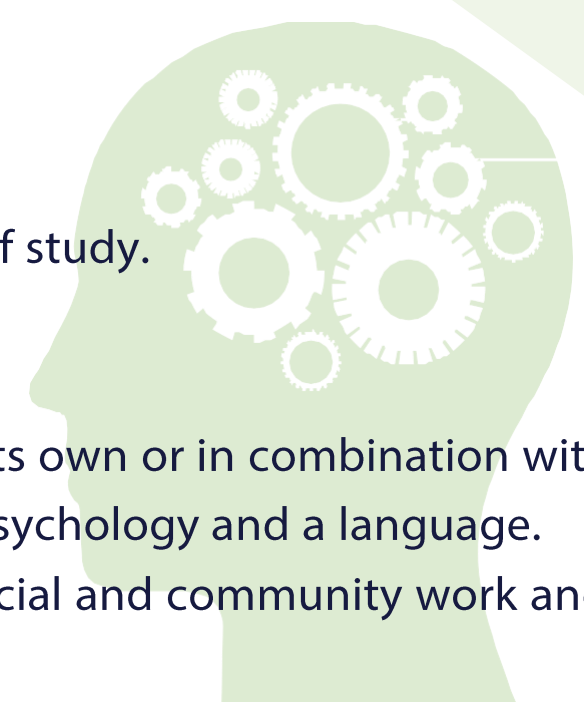
Further Opportunities Following this Course

Psychology has strong links with both science and the humanities and can be studied either on its own or in combination with another subject up to degree level e.g. Psychology and Computer Science, Psychology and Art, Psychology and a language.

Psychology opens the way to a wide variety of careers: marketing, counselling, management, social and community work and scientific research to name but a few.

Securing a Place at Post 16

Students must have minimum Grade 6 in English language, a Grade 6 in Science and a Grade 6 in Mathematics. An ability to write in a clear, logical way is essential as well as a genuine commitment to the reading that is required and a lively interest in psychology.



Sociology

A Level



Syllabus Code:

7192

Contact:

Mr D Bryan

Entry Requirements:

6 in English

Student Course Criteria

For those students with a genuine interest in studying society and the world around them.

Course Overview

The A level is two years in length.

First Year:

Compulsory content: Education, Methods in Context, Research Methods

Second Year:

Options: One topic is chosen from option 1 and one topic from option 2.

Option 1

Culture and Identity

Family

Health

Work

Option 2

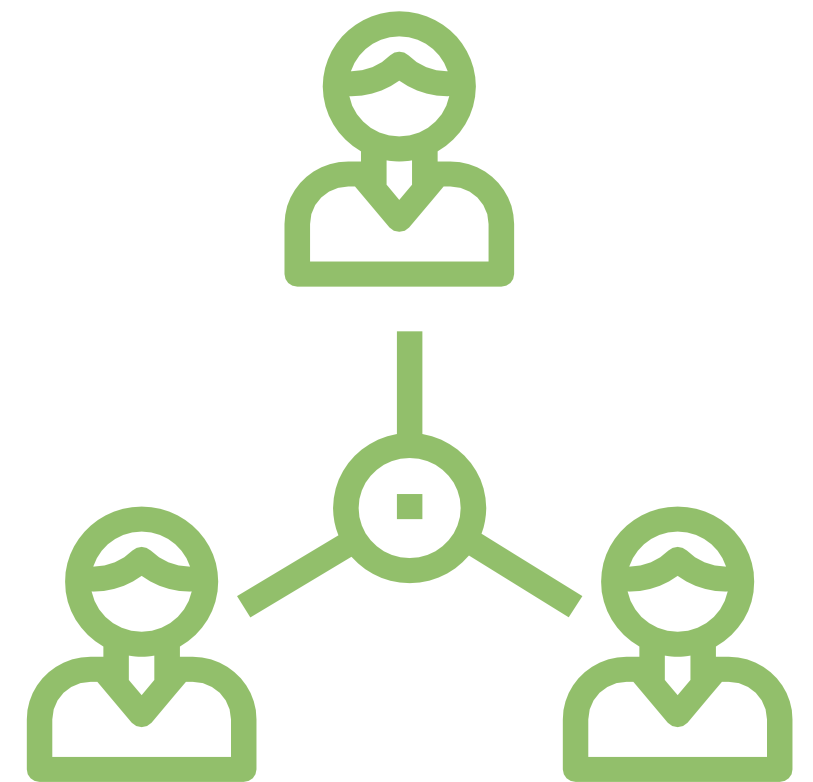
Beliefs in Society

Global Development

Media

Stratification

Crime and Deviance



Course Assessment

The A level qualification is assessed through three papers in the final summer of study.

Further Opportunities Following this Course

Sociology is a social science and has strong links with the humanities. It can be studied either on its own or in combination with another subject up to degree level e.g. Sociology and Business Studies. Sociology and Computer Science, Sociology and Statistics. Sociology opens the way to a wide variety of careers – management, social work, social research, marketing, journalism and many more.

Securing a Place at Post 16

Students must have GCSE grade 6 and above in English Language. An ability to write in a clear logical way is essential as well as a genuine commitment to the reading that is required. A real interest in current affairs is also vital.

Spanish

A Level



Syllabus Code:

7692

Contact:

Ms M Burton

Entry Requirements:

7 in Spanish



Student Course Criteria

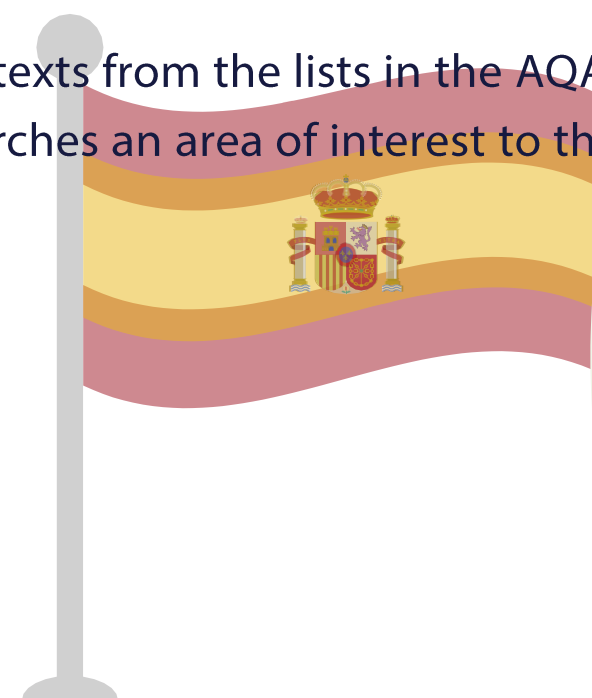
This course will appeal to students who have enjoyed Spanish and achieved a high standard at GCSE level and who wish to develop their linguistic skills alongside their understanding of the culture and society of countries where Spanish is spoken.

Year 1 - Subject Content:

- Aspects of Hispanic society: Modern & traditional values; cyberspace; equal rights
- Artistic culture in the Hispanic world: Modern day idols; Spanish regional identity; cultural heritage
- Literary texts and films: Either one text or one film from the lists in the AQA specification
- Grammar

Year 2 - Subject Content:

- Aspects of Hispanic society: Modern & traditional values; cyberspace; equal rights
- Multiculturalism in Hispanic society: Immigration; Racism; Integration
- Artistic culture in the Hispanic world: Modern day idols; Spanish regional identity; cultural heritage
- Aspects of political life in the Hispanic world: Today's youth, tomorrow's citizens; Monarchies, republics and dictatorships; Popular movements
- Literary texts and films: either one text and one film or two texts from the lists in the AQA specification
- Individual research project: the student identifies and researches an area of interest to them which relates to a country or countries where Spanish is spoken.
- Grammar
- Assessment
 - Paper 1: Listening, reading and writing (40% of the A-level)
 - Paper 2: Writing (30% of the A-level)
 - Paper 3: Speaking test (30% of the A-level)



Further Opportunities Following this Course

As well as leading to the obvious degree courses in languages and jobs using languages, an A Level qualification can be extremely useful in any career as knowledge of languages is a sought-after skill in all walks of life.

Securing a Place at Post 16

We require a GCSE Spanish Grade 7 or above.

ENFIELD COUNTY SCHOOL SIXTH FORM

SUBJECT ENTRY REQUIREMENTS

If you do not know what you want to study at university then it is a really good rule of thumb that taking two facilitating subjects will keep a wide range of degree courses open to you.

KS5 Subject	Descriptor	Specific minimum grade at GCSE	
English Language	Facilitating	Eng Lang and Lit	6 or 6
English Literature	Facilitating	Eng Lang and Lit	6 or 6
Mathematics	Facilitating	Maths plus 70% pass in Sept Entrance Test	7
Biology	Facilitating	Biology or Science (H) plus English and Maths	6 or 6-6, 6&6
Chemistry	Facilitating	Chemistry or Science (H) plus English and Maths	6 or 6-6, 6&6
Physics	Facilitating	Physics or Combined Science English and Maths	7 or 7-7, 5&7
Geography	Facilitating	Geography	6
History	Facilitating	History	6
French	Facilitating	French	7
Spanish	Facilitating	Spanish	7
Fine Art	Specialist	Art	6
Film Studies	Specialist	English Language	6
Music	Specialist	Music	6
Philosophy	Specialist	English Language	6
Photography	Specialist	English or Art	6 or 6
Politics	Specialist	Humanities	6
Psychology	Specialist	English, Maths or Science	6, 6 or 6-6
Sociology	Specialist	English Language	6
Textiles	Specialist	Art or Textiles	6 or 6
Applied Science BTEC (Ext Cert)	Vocational L3	Two separate Sciences or Science plus English&Maths	5, 5 or 5-5 Plus 5 & 5
Health and Social Care BTEC (Ext Cert, Dip, Ext Dip)	Vocational L3	5 subjects incl. English & Maths or Science	4, 4, 4, 4

Additional provision – It may be possible to study the courses below at Enfield Grammar School provided the course requirements are met and it can be accommodated on the timetable.

Business Studies (EGS)

Vocational L3

5 subjects at 5 inc. Eng and Maths

Computer Science (EGS)

Specialist

English 6, Maths 6, Computer Science 5

Economics (EGS)

Specialist

English 6, Maths 6

Further Mathematics (EGS)

Facilitating

Maths 8

PE (EGS)

Specialist

English 5, PE 5

Financial Studies (EGS)

Specialist

5 subjects at 5 inc. Eng and Maths

Music Tech (EGS)

Specialist

5 subjects at 5 inc. Eng and Maths

BTEC Sports (EGS)

Vocational L3

5 subjects at 5 inc. Eng and Maths



Student Responsibility

Post-16 Education at Enfield County School is full-time. Students are required to attend school every day and be on site from 8.30am in the morning until 3.20pm. Post-16 students may go off-site during their lunchtime to attend any structured activities arranged by their teachers or tutors and/or to attend collegiate lessons.

Students are required to attend all their timetabled lessons, including Enrichment lessons of Citizenship, PSHE and Careers Education and supervised study sessions in any non-contact periods. They also need to attend form time and assembly.

In the event of a genuine reason for absence, the parent / carer should telephone the school before 8.30am on [020 8363 3030](tel:02083633030) and provide a note, to explain the absence.

As attendance is critical to success at Post 16, students are expected to achieve as near to 100% attendance as is possible. Anything under 95% attendance will impact on a student's learning.

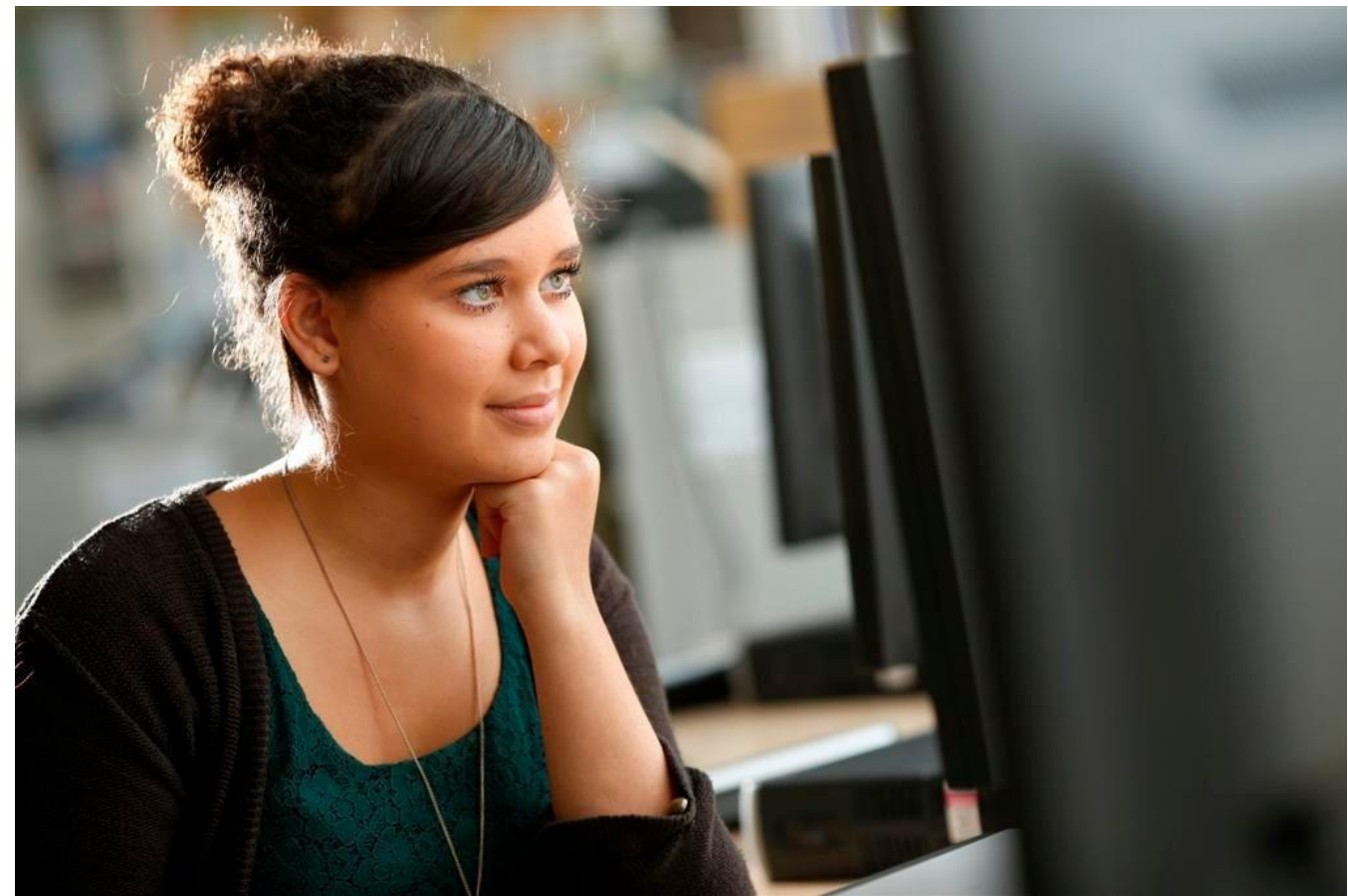
The following will be deemed as acceptable and will be authorised (with advanced documentary evidence):

- A medical appointment which cannot be arranged outside school hours (orthodontist, specialist or hospital appointments)
- Attendance at Further Education or Higher Education interview or University Open Day*
- A work experience placement linked to your course*
- Participation in a specific extra-curricular activity such as drama, music, sport – if it is not a cause of regular absence*
- Attendance at a family funeral
- A religious holiday
- A need to look after someone for whom you have caring responsibilities*
- A driving test

* = with the agreement of your form tutor and/or Year Head

The following will be deemed as acceptable and will be authorised (with documentary evidence following the day of absence):

- An emergency situation where someone is taken very ill at home and you are the only available person to deal with the problem
- Transport problems not known in advance where there is no alternative means of getting to school.





Post-16 Learner Agreement

The Post-16 Learner Agreement outlines the expectations and responsibilities of students, parents/carers and staff within the Post-16 at Enfield County School for Girls:

As a student in Enfield County School for Girls Post-16 I will...

- Strive to achieve the highest academic standards of which I am capable
- Recognise that study in the 6th form is a full-time occupation
- Attend all lessons, including independent study, assemblies/briefings and form time
- Attend any additional lessons and after school study periods
- Arrive to all lessons punctually
- Ensure work set for lessons where the teacher may be absent is collected and completed
- Follow agreed procedures to report any absence whilst maintaining attendance above 95%
- Meet all coursework and homework deadlines
- Use study periods productively, take responsibility for my own learning
- Bring equipment to lessons as necessary
- Provide a positive role model for younger students
- Keep paid work to a maximum of 10 hours per week during term time and never during school hours
- Manage my social life and other commitments so that they don't impede my studies
- Abide by the 6th form dress code
- Not act in such a way that I might bring the reputation of the school into disrepute
- Treat school staff, fellow students, property and resources with respect
- Avoid taking holidays during term time
- Only book driving lessons or tests during school time if given written permission by the Head of 6th form

Enfield County School for Girls staff will...

- Aim to provide high quality education at all times and in all lessons
- Provide regular assessment of work with constructive feedback on how students' work can be improved
- A form tutor who will monitor your progress, provide guidance and assist in setting targets for improvements and achievements
- Provide a 6th form induction programme to help students make the academic and social transition from Y11 to Y12
- Provide support, information, advice and guidance on further and higher education and employment opportunities
- Communicate with the home regularly on all aspects of school life including students' progress, achievement, attendance and pastoral issues
- Provide access to a range of curricular and extracurricular activities and experiences to enrich and broaden students' education

As a parent or carer, I will...

- Support and encourage my child to achieve their full potential
- Recognise that 6th form study is a full-time occupation
- Support the school in the expectation that students all attend lessons, assemblies and registration periods
- Maintain close communication with the school on aspects that could affect students' progress, including attendance and pastoral issues
- Report any absence
- Provide a suitable area for home study
- Encourage my child to keep paid work to a maximum of 10 hours per week during term time and never during school hours
- Support the school by not taking my child on holiday during term time
- Attend school events that involve my child including parents' evenings

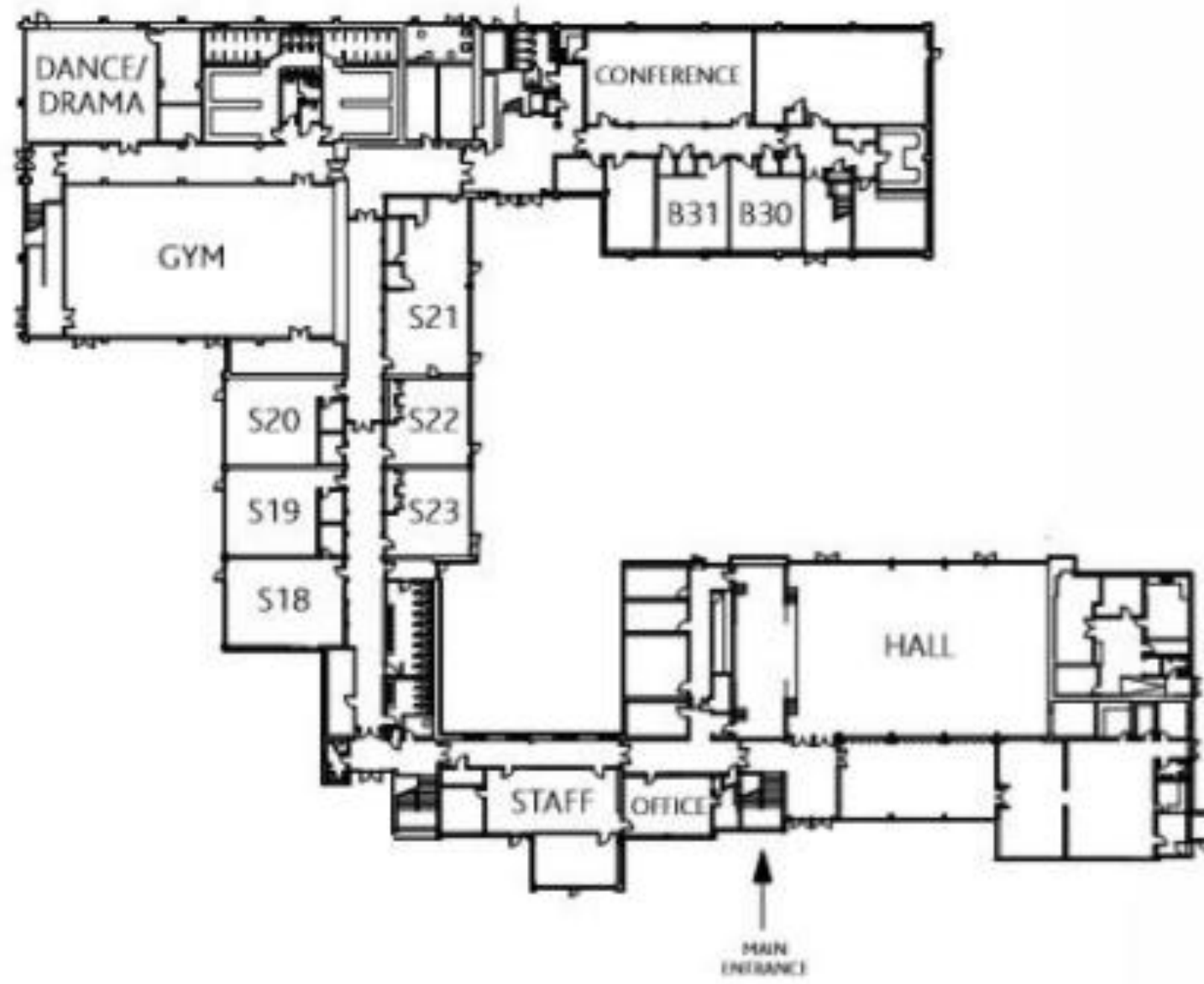
The Sixth Form Learner Agreement outlines the expectations and responsibilities of students, parents/carers and staff within the Sixth Form at Enfield County School for Girls:

Student name: Signature: Date:

Parent/Carer name: Signature: Date:

Staff name: Signature: Date:

Subject	Room
Applied Science BTEC L3	Conference room
Art	S21
Biology	Conference room
Business BTEC Level 3 Single Award	S23
Chemistry	Conference room
Classics	B30
Economics	B37
English language	S28
English literature	B9
Film Studies	S26
French	B36
Geography	B33
Health and Social Care BTEC Level 3 Single Award	S29
History	B34
Mathematics	S19
Philosophy	S20
Photography	S22
Physics	Conference room
Politics	B34
Psychology	B35
Sociology	B31
Spanish	B36
Textiles	S24



UPPER SCHOOL. GROUND FLOOR



UPPER SCHOOL. FIRST FLOOR